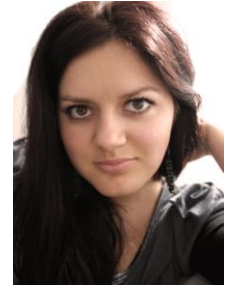


CURRICULUM VITAE



Personal information

Surname: CĂLIN
Christian names: IULIA-ELENA
Academic degree: PhD
Date of birth: 15.03.1984
Place of birth: Tulcea
Citizenship: Romanian
Civil status: Unmarried
Address: 1, Nicolae Balcescu Bd. Nr. 1, 010041, Sector 1, Bucuresti
E-mail: iuliacalin2000@yahoo.com

Education and degrees

2008 – 2011, PhD in Geography, Quantitative and qualitative analysis and integrated environment monitoring, Faculty of Geography, University of Bucharest.

Title of thesis: *Landscape management, assessment and prognosis. Case study: Babadag Lake and surroundings*, Scientific advisor: Prof. Univ. Dr. Ileana Pătru-Stupariu

2007 – 2008, Master Degree in Sustainable management of geographic landscapes through regional planning and organization, Faculty of Geography, University of Bucharest

2003-2007, B.Sc. in Geography, Faculty of Geography, University of Bucharest

List of main research papers

Călin, I., (2010), Protection status of Babadag Lake and surroundings versus current landscape state, Water resources in Romania. Vulnerability to anthropogenic pressures, Ed Transversal, Targoviste, ISSN

978-606-8042-65-7

BDI

1. **Călin, I.**, Pătru-Stupariu I., (2011) *Landscape changes of Babadag lake and limitrophe area in the last 2 decades*, Annals of DDI, vol 17: 139-146.
2. **Călin, I.** , Abdellaoui, A., Pătru- Stupariu, I., (2011) *Detecting anthropic intervention in landscape through NDVI. case study: the surrounding area of Babadag lake (Romania)* Geographical Forum, Craiova), in press.

Books chapters

Pătru-Stupariu I., Stupariu, M-S.,**Călin I.**, Cuculici, R., Huzui, A., Oprea, R.,Stănescu A. (2011) *Elaborating and implementing an algorithm for landscape evaluation and prognosis applications for the mountainous and the Subcarpathian sectors of Prahova Valley*, Bucharest, ISBN 978-606-61

Conferences

Iurea D., **Călin, I.**, *Green Buildings, a necessity!*, National Symposium - Faculty of Geography, University of Bucharest (November 2008)

Călin, I., Pătru-Stupariu I., *Landscape changes of Babadag lake and limitrophe area in the last 2 decades*, International Conference "Deltas and Wetlands", Tulcea (1-3 September, 2010)

Călin, I., *Protection status of Babadag Lake and surroundings versus current landscape state*, National Symposium, *Water resources in Romania. Vulnerability to anthropogenic pressure*. Târgoviște, (11-13 June, 2010)

Ileana Pătru-Stupariu, Alina Huzui, **Iulia Călin** *Spatial pattern analyses of landscape using multi-temporal data sources*, International Conference Environment-Landscape- European Identity 4 - 6 November, Bucharest, 2011

Participation in research projects

1. *Defining the technical system with functions of green space land in order to protect and improve environmental conditions in Bucharest - environmental issues, according to the Task of the Bucharest Municipality*. Director: Lect. Dr. Gabriela Manea. Beneficiary: BUCHAREST PROJECT (2006-2007);
2. *Development and implementation of an algorithm for landscape assessment and prognosis. Application to the mountainous and subcarpathian sector of the Prahova Valley*. Director: Prof. Univ. Dr. Ileana Pătru-Stupariu. Funded by The National University Research Council in Romania (2009-2011).

Other relevant information

From the 1st of September 2010 to the 28th of February 2011, Doctoral mobility fellowship, "*Ville, Transports et Territoires*", Paris-Est Creteil University, France

Languages

French	Moderate (spoken and written)
English	Fluent (spoken and written)
German	Begginer level (spoken and written)

Other Professional Activities

2009 – present, Limnology Association, member

Technical skills

MS Office (Word, Excel, PowerPoint, Outlook Express), SIG (ArcGis, Idrisi Andes, MapInfo Professional, Envi), Adobe Photoshop, Corel Draw.